



### A Series

#### Precision Photomultiplier Rack Mount DC to DC Modular Power Supply

The A series of high voltage power supplies is available in a variety of outputs from 500 VDC to 3000 VDC. Designed for applications where low ripple and low noise is especially important. Their rugged metal case design makes them well suited for both laboratory and OEM requirements. Each unit is well regulated at .001% and employs short circuit protection. They can be driven from a D/A converter or internal 10 volt stable reference supplied.



Model	Output Voltage	Current	Output Ripple
A28SX500	0 to 500 VDC	0 to 8 mA	5 mV P-P
A28SX1000	0 to 1000 VDC	0 to 4 mA	4 mV P-P
A28SX2000	0 to 2000 VDC	0 to 2 mA	2 mV P-P
A28SX3000	0 to 3000 VDC	0 to 1 mA	6 mV P-P

#### FEATURES

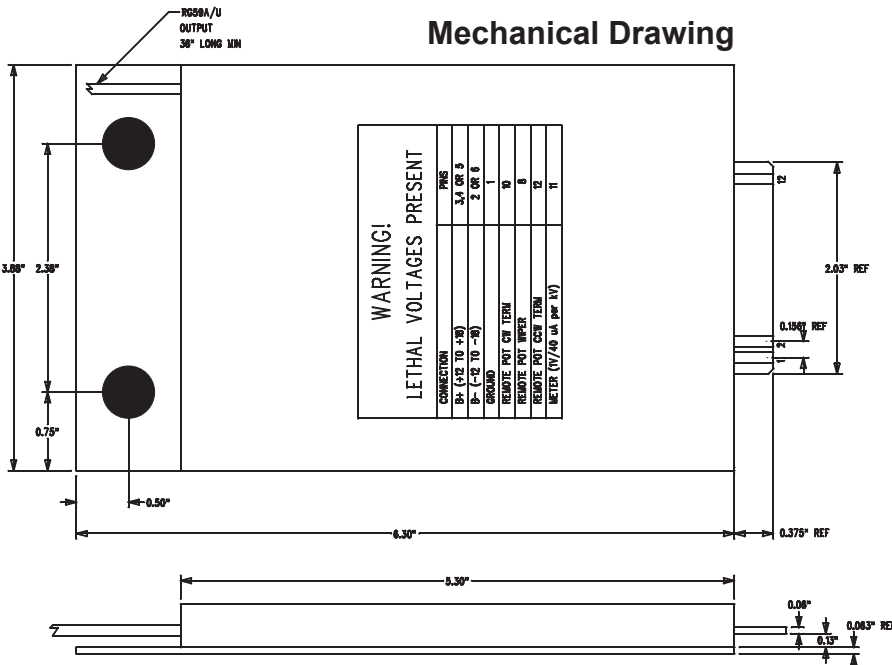
- ULTRA Low Ripple
- Local Remote Programming
- Current Limiting
- Excellent Regulation
- Short Circuit Protected
- Adjustable Outputs

#### APPLICATIONS

- Photomultiplier Tubes
- Lasers
- Q Switches
- Solid State Detectors
- Ion Beam
- Ion Guns

#### ELECTRICAL SPECIFICATIONS

- Input Voltage: 24 to 30 VDC (Overvoltage 10%)
- Output Voltage: See Table (Adjustable 0 to 3000V)
- Output Current: See Table
- Output Ripple: Less than <10mV P-P (2% Typ.)
- Regulation Line /Load: +/- 1%
- Output Monitoring: 0 to 10 Volts
- Reverse Polarity: 100 Volts



#### PHYSICAL SPECIFICATIONS

- Operating Temperature: 0 to 50 C
- Storage Temperature: -20 to +85 C
- Size: 6.3" X 3.8" X 1.14H (160.01 X 96.52 X 35.55 H)
- Weight: .3Kg
- Case Material: Six Sided Aluminum
- Case Finish: Black Epoxy Paint
- Input Connections: 12 Pin Edge Card
- Output Cable: 36: RG-59 B/U
- Mounting: Rack Mount